

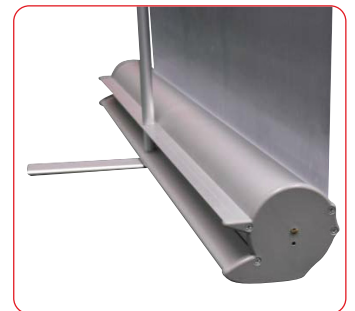
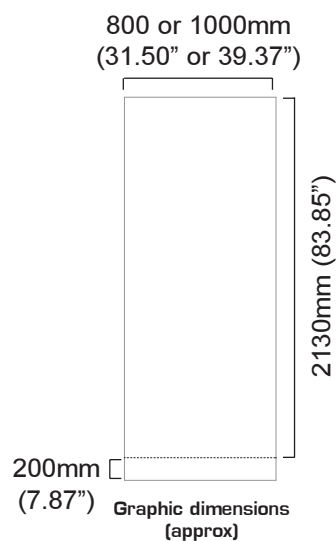
ROLLA BANNER



A lightweight economy roller banner with slim base and bungee pole making it very compact, complete with a twist out foot for extra stability.

features & benefits

- Lightweight components
- Reusable spring loaded rail clamp system for easy graphic application
- Slide on/off easy change graphic applicator
- Twist out stabilising foot for extra stability
- Available in anodised silver
- Choice of 800mm or 1000mm widths
- Includes quality carry bag



hardware specifications	graphic specifications	additional info
<p>Hardware Dimensions (mm): 2200 (h) x 825 (w) x 400 (d) approx. 86.61" (h) x 32.48" (w) x 15.75" approx. (Depth dimension refers to twist out foot)</p> <p>Weight: 4kg (8.8lbs) approx (including carry bag)</p>	<p>Visible Graphic Dimensions (mm): 2130 (h) x 800 or 1000 (w) approx 83.85" (h) x 31.50" or 39.37" (w) approx</p> <p>Substrate: Add 200mm (7.87") to base of graphic to allow for roller mechanism. Recommended material thickness 225 - 300 Microns (8.86 - 11.81 Mils)</p>	<p>Included in kit: Top rail, base, bungee pole set and carry bag</p> <p>Availability: Anodised silver</p>